

Diritti riservati

All rights reserved

A

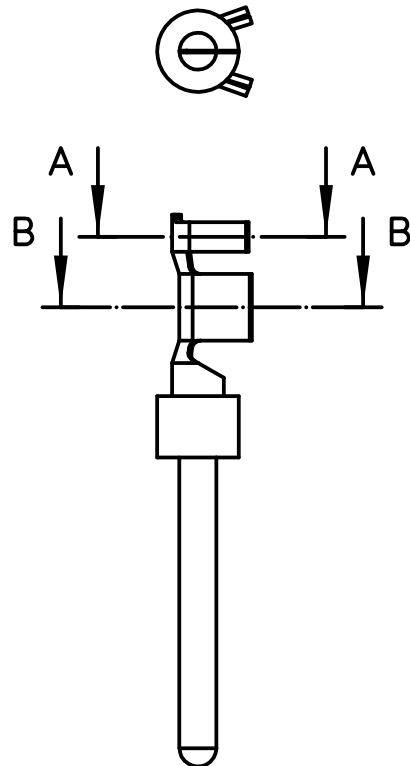
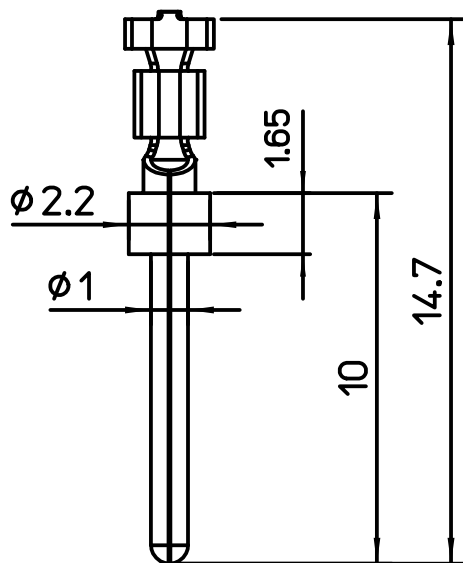
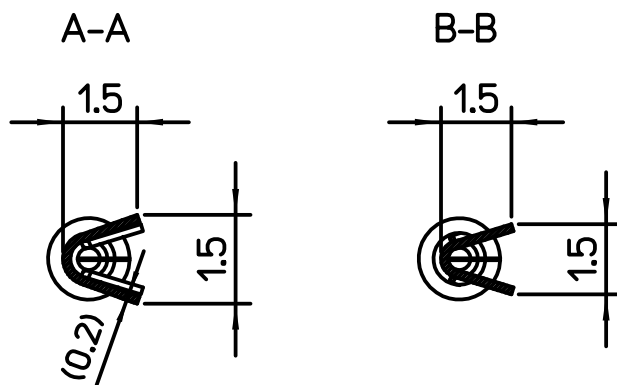
B

C

A

B

C



ILME CODE	PERFORMANCE LEVEL
SIM1D 0.2	PL1
SIM2D 0.2	PL2
SIM3D 0.2	PL3

-Selective Gold plating over Nickel in the contact area, tin plating in the crimp area, RoHS conform

-Material: brass (leadfree)

-Single contact packaging

REV	DATA	FIRMA	
Simplified representation with dimensions without tolerance			
Original Size A4		SIMxD 0.2	
Date 29/10/19		Stampd male crimp contacts 5A 0.08-0.22mm ² , 24-28 AWG.	
Sign. Pitasi		Scale 5:1	